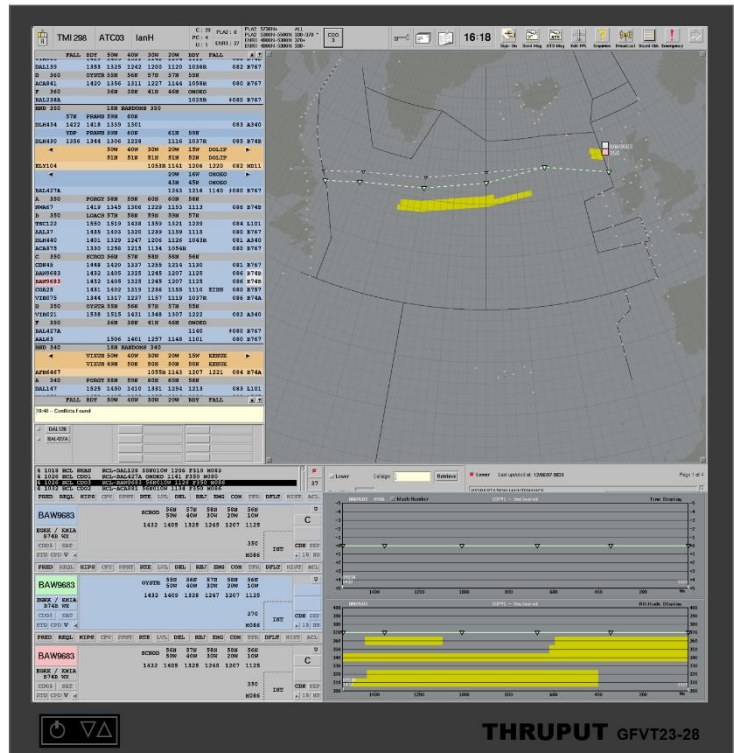


THRUPUT

2K x 2K Colour LCD Monitor

*High reliability 2K x 2K
primary control monitor.*

- 2048 x 2048 resolution.
- DVI DL and DP inputs.
- Silent operation: no cooling fans.
- High Brightness 800 NITS.
- Optically bonded glass and touchscreen option.
- Dual power supply.
- DP 1.1 Recording port.



Perfect rendering

The Thruput GFVT23-28 displays 4 megapixels across its 28" screen. This makes for a perfect pixel pitch of 0.246mm or 103 dots per inch (the same as the Sony DDM and Barco ISIS) so text and symbols are crisp and fully compliant with FAA standards.

Simplicity

- No software required.
- Plug and play solution.
- Ultra high reliability.
- Silent operation.



2K x 2K Colour LCD Monitor GF VT 23- 28

Pure colour brightness control

Brightness is controlled by Thruput's pure colour control technology, making it ideal for any Operations Room:

- Displayed colours are perfect at all brightness settings.
- Pure White Backlight.
- Maintains colour accuracy and contrast at all brightness settings.
- Uniform brightness across the screen.
- LED backlights.
- IPS Black.

Safety

Thruput True-pixel graphics technology provides perfect pixel processing:

- Low temperature operation.
- No on-screen display or pixilation engine.
- Directly maps input pixel to LCD pixel.

Green solution

The GF VT 23-28 is a green solution:

- Does not use any hazardous materials.
- Fully RoHS compliant.
- Low power consumption.



Specification

Horizontal resolution	pixels	2048
Vertical resolution	pixels	2048
Horizontal screen size	mm	501.97
Vertical screen size	mm	501.97
Diagonal	inches	28
Luminance range	Cd/m ²	10-800
Aspect Ratio	1:1	
Viewing angle	178 Degrees	
Colour Temp	65000K	
Display colours	16.7M	88% NTSC
Contrast ratio	Dynamic	5000:1
Input Channel options	2 x DP, 2 x DVI, 2 x HDMI	
Power	Universal mains, dual redundant PSU.	
Power Consumption/ Supply	50W max/ Standard: 85VAC ~ 264 VAC, 47/63 Hz	
Fans	No fans, passive cooling.	
Response time	<10ms (7.5 typ)	
Recording port output	1 x DP, DVI option.	
Configuration	Desktop, VESA or custom panel, DDM console.	
Noise	0 dB (silent operation)	
Compliance	CE, FCC, CCC and ROHS	
Control Module/ OSD	Controller. Control module can control: -Brightness -OSD menu - On/Off	
Signal detection	Manual and Automatic	
USB option	1 x input USB, 4 x output USB.	
Mounting VESA	100 x 100, 200x100, 200x200	